

Louisiana Law Enforcement Torch Run for Special Olympics

Standard Operating Procedures and Torch Run Safety Guidelines

The following pages will outline the procedure that is to be followed while carrying the "Torch".

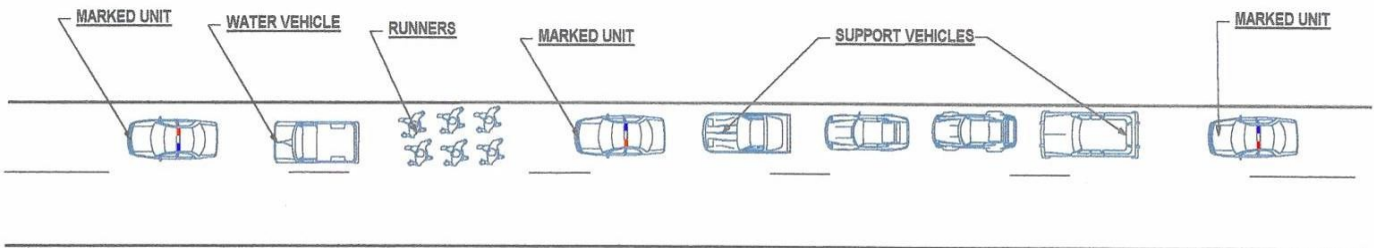
- Due to dangers of other vehicles and drivers, this procedure is to be used by all Law Enforcement Agencies throughout the state.
- This will help insure the safety of the runners and support vehicles.
- The Law Enforcement Torch Run is a **media** event.
- The "torch" is being carried from every corner of the state to the State Summer Games, specifically, the Opening Ceremony.
- This is not a fun run, in which people can walk, ride bikes, etc. The runners should pace themselves at approximately a ten (10) minute mile.

All runners are to stay together as a group. If a runner cannot keep up with the group, that runner is to catch a ride until they are ready to re-join the group or until the end of the run. If a runner wants to continue the run, he/she is to get a ride from a support vehicle towards the front of the procession of support vehicles.

- At no time should a runner wait to catch a ride with their respective agency.
- In addition, at no time will vehicles try to move ahead of other vehicles unless absolutely necessary.

In Diagram #1, the following procession order will be used during the run. Marked units (lights and side markings) will be used as a lead and trail units.

The first unit will be a marked unit. 2nd will be a water truck. Note: The water truck should stay



approximately 20 feet ahead of runners to prevent runners from inhaling the exhaust of the vehicle. The 3rd in the procession are the runners. 4th will be another marked unit. 5th are support vehicles. The last vehicle will be a marked unit.

In Diagram #2a & #2b, the following procedures will be followed when entering in a city or town. All intersections will be blocked by marked unites prior to the lead unit arriving at that intersection. These marked unites will stay at that intersection until the last unit passes. Marked units will stop all traffic at lighted intersections prior to the lead unit arriving and will hold that position until the last marked unit passes.

If possible, use local law enforcement units to block intersections and traffic lights and use other law enforcement agencies to escort the procession. Remember to use extreme caution when stopping traffic at these intersections.

Diagram #2a displays the procession of the run occupying a "single" lane.

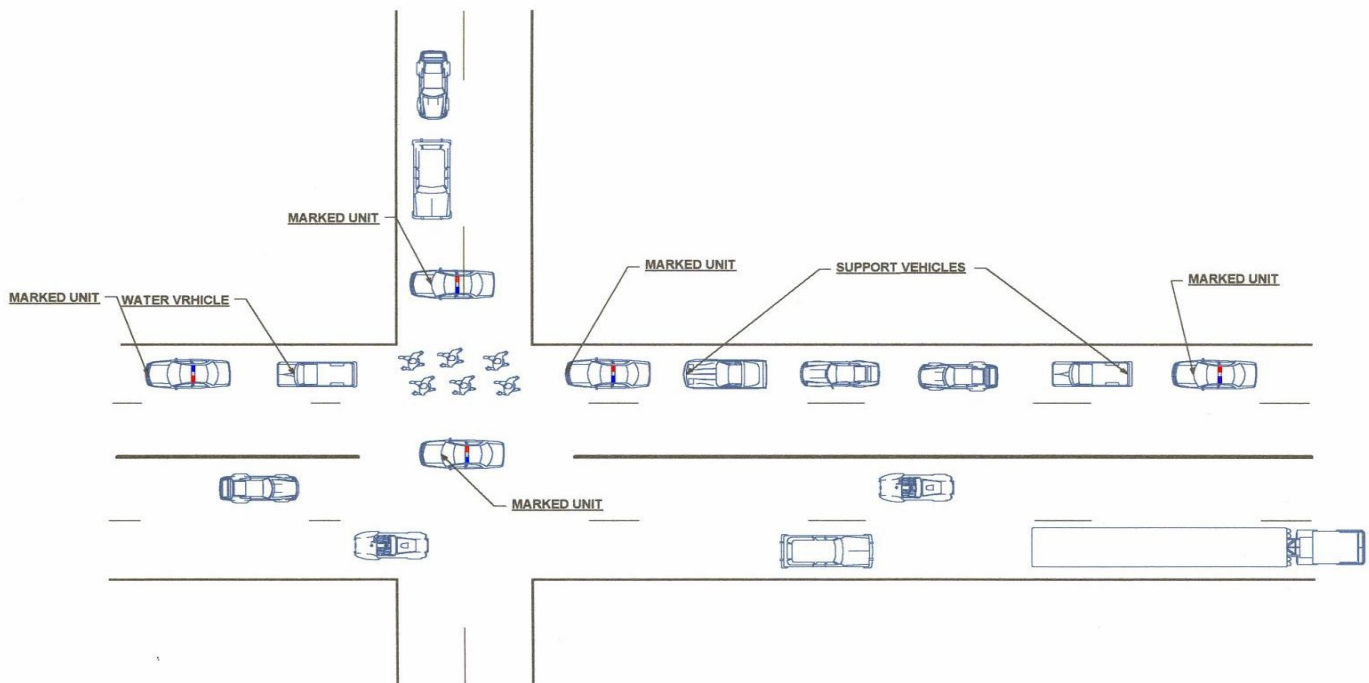
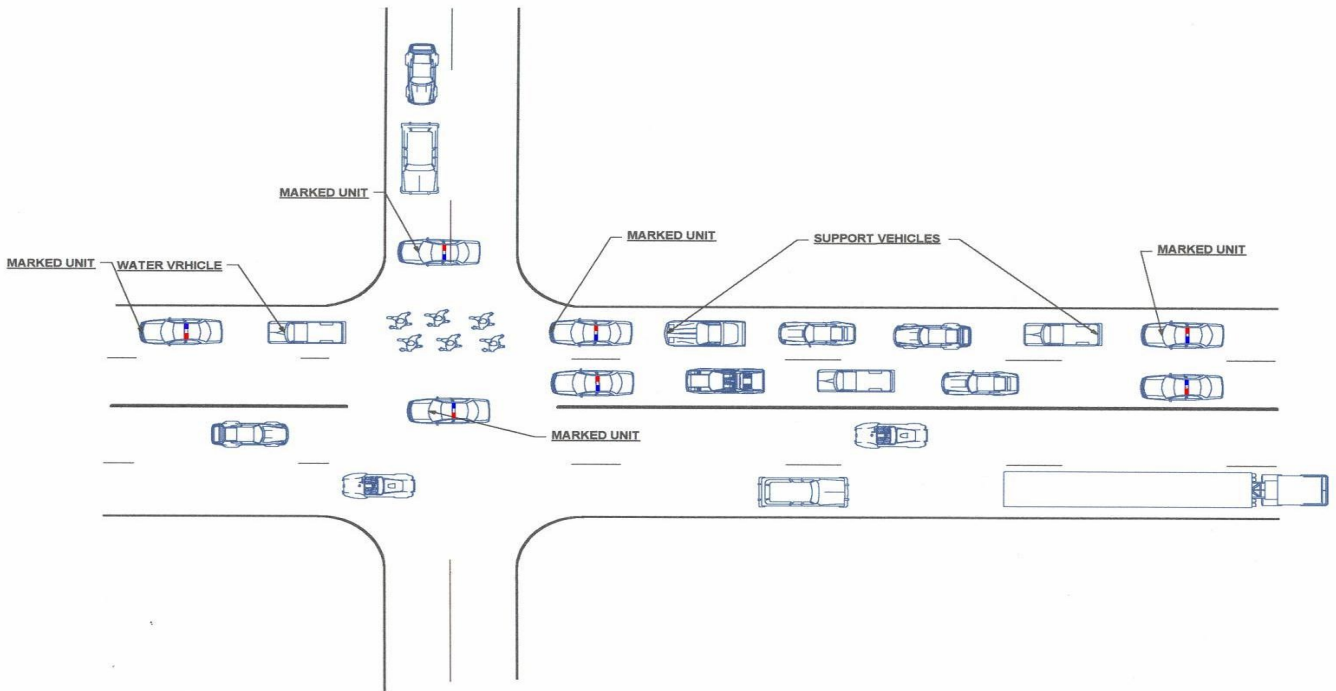


Diagram #2b displays the procession of the run occupying "double" lanes



In Diagrams #3a & 3b, marked units will block the merging traffic or the inside lane of traffic the runners are merging into.

Diagram #3a displays the procession when runners reach merging traffic.

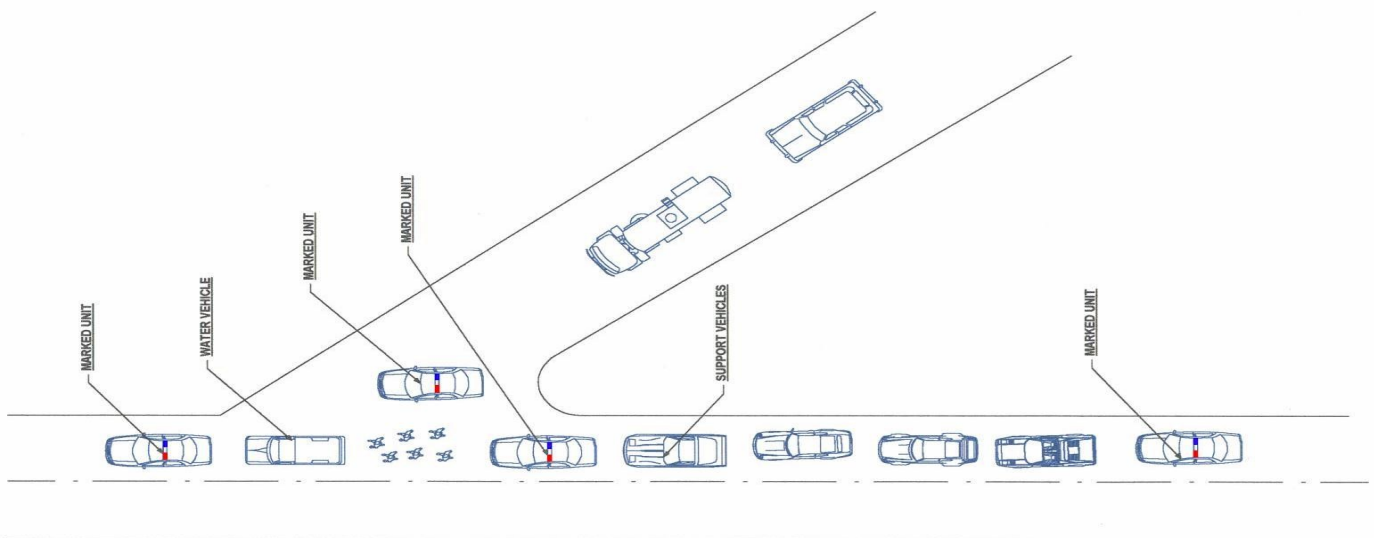
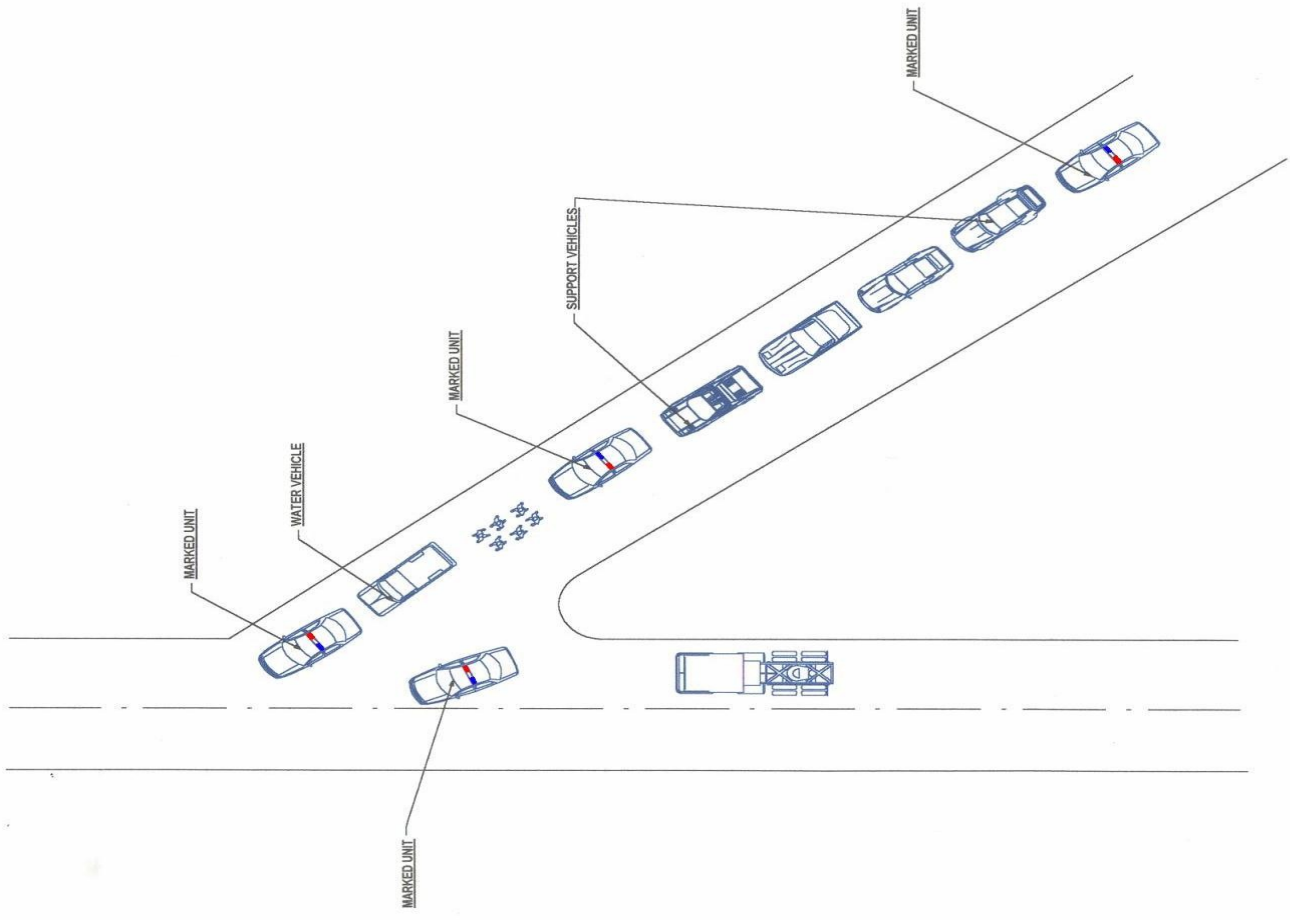
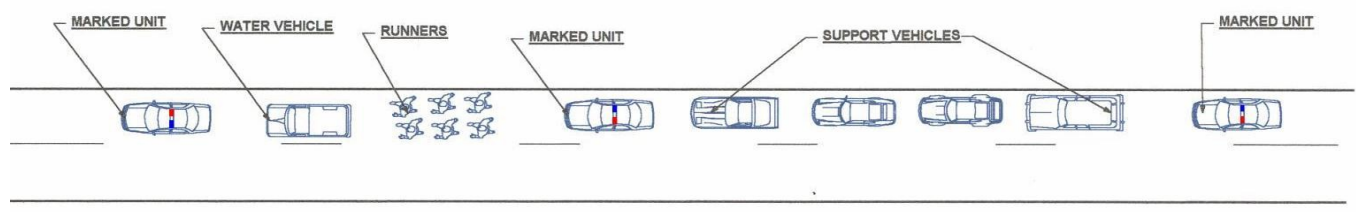


Diagram #3b displays the procession when the runners are merging into traffic
 In Diagram #4, while the procession is on an open highway, runners are to stay in a group and



run close to the shoulder of the road. At no time should the trailing marked unit and support vehicles be more than 2 car links behind the runners. In addition, there are to be no gaps in the procession line.

Notes:



- If possible, lead and trailing units should have radio contact with each other.
- Other diagrams are added to show proper procedures for other circumstances.
- These procedures are to be followed by all Torch Run Areas to ensure the safety of the runners as well as keep the run on the time schedule.
- It is strongly recommended that all areas try to help the smaller areas during their Torch Run. If runners are not available, support vehicles should help.
- Lastly, remember, the **goal** of the Torch Run is PUBLIC AWARENESS. The more they see of us, the better WE look.

