

**Special
Olympics**
Louisiana



2022 ANNUAL REPORT



LOUISIANA
Feed Your Soul.
ExploreLouisiana.com



www.specialolympicsla.org

LEADERSHIP MESSAGE

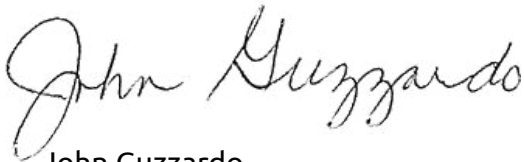
To our Thousands of Friends and Supporters,

2022 was fantastic for everyone involved, so thanks for being there for the organization. Special Olympics Louisiana (SOLA) is definitely climbing back to where we were and we are looking forward to what is next. In 2022, we were able to successfully host seven State Games and Competitions, increase the number of active volunteer hours to 36,948, attend the Special Olympics USA Games in Orlando with SOLA athletes bringing home over 100 medals and ribbons, and conduct several fantastic fundraisers.

We are so proud of each of the 6,713 registered athletes in our state who are inspiring others by telling their stories and showcasing their awesome abilities as part of SOLA. Our athletes continue to prove every day that they can accomplish so much.

Your contributions of time and financial donations have put the organization in a solid position and we are planning more great things for the near future. Thank you for believing in the athletes for their courage, joyfulness, and competitiveness. They enrich all of our lives more than they'll ever know.

Stay tuned for everything coming your way in 2023, we appreciate you and your dedication. Log in to www.specialolympicsla.org and see how you can get more involved.



John Guzzardo
President & CEO



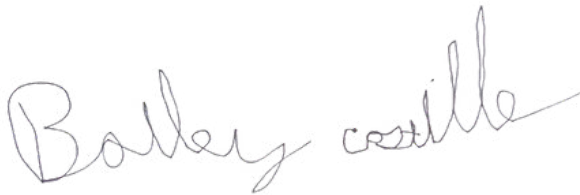
ATHLETE LEADER MESSAGE

I started participating in Special Olympics in grade school, where I only participated in track & field. When I got to High School, I started bowling and liked that much better!

I did not participate for a while after high school, but started bowling again a few years after.

For the last few years, I have been a part of the Athlete Leadership Council and participate in all of our meetings where we discuss leadership and how to use our voices for the betterment of the organization, along with having the confidence to speak for myself. I was also given the opportunity to speak at SOLA's Leadership Conference!

I am happy to be able to participate again because it helps me be a better person by working hard in each sport I participate in. I still participate in Special Olympics Louisiana because I love having fun with other athletes, learning different sports, and the family atmosphere it gives. I encourage everyone to join!



Bailey Castille
SOLA Athlete





2022

REACH REPORT

Sports & Competition



6,713

Athletes & Unified Partners

459

Unified Partners

1,026

Athletes & Partners on Unified Teams

70



Traditional Sports Competitions

18

Unified Sports Competitions

492

Schools Engaged in Special Olympics

1,527

Health Screenings Conducted

375

Unified Champion Schools

25

Health & Fitness Activities



Beyond Sports

Our People

36,948

Volunteer Hours

2,880

General Volunteers



716

Active Coaches

214

Health Volunteers

223

Youth Volunteers



50

Active Local Programs

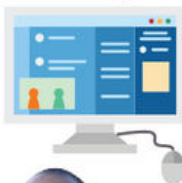
20

Unified Clubs



Local Programs

Social



16,854

Website Views

9,000

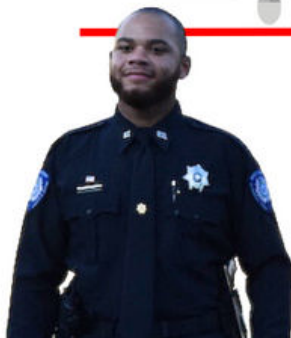
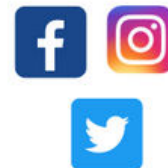
Facebook Friends

3,485

Twitter Followers

2,044

Instagram Followers



1,750

Law Enforcement Officers & Personnel Involved



50

Law Enforcement Agencies

Law Enforcement Torch Run

2022 SPONSORS



ExploreLouisiana.com



Alliance Compressor
Associated Grocers
Assurance Financial
BASF
Blue Cross Blue Shield of Louisiana
Capital Area United Way
Care, Inc.
Children's Hospital New Orleans - LCMC Health
Choctaw Pines Casino
David B. Danel, CPA
Dow
Entergy
ESPN
Eugenie & Joseph Jones Family Foundation
Exxon Mobil
Finish Line Youth Foundation
Fluor Corp
Fred B. and Ruth B. Zigler Foundation
Goldring Family Foundation
Grant's Gift Foundation
Greater New Orleans Foundation
Hahn Enterprises
Healthy Blue
Henry Schein Cares Foundation
J. Edgar Monroe Foundation
Joyce S. Mudd Foundation
Knights of Columbus

Louisiana Lottery
Louisiana Sheriff's Association
Louisiana Wildlife Agents Association
Metairie Bank
NFL Foundation
Oscar J. Tolmas Charitable Trust
Paragon Casino
Phillips 66
Pinnacle Financial Strategies Foundation
Poindexter Foundation
PoolCorp
Republic Finance
Robert & Mary Hollier Family Fund
Smitty's Supply, Inc.
Special Olympics, Inc.
Spinecare Chiropractic
St. John United Way
Stewart Construction
Stirling Properties
The Hometown Foundation
The P&G Fund of the Greater Cincinnati Foundation
United Way of St. Charles
Walmart Foundation
Woldenberg Foundation

STATEMENT OF FINANCIAL POSITION

DECEMBER 31, 2022 & 2021

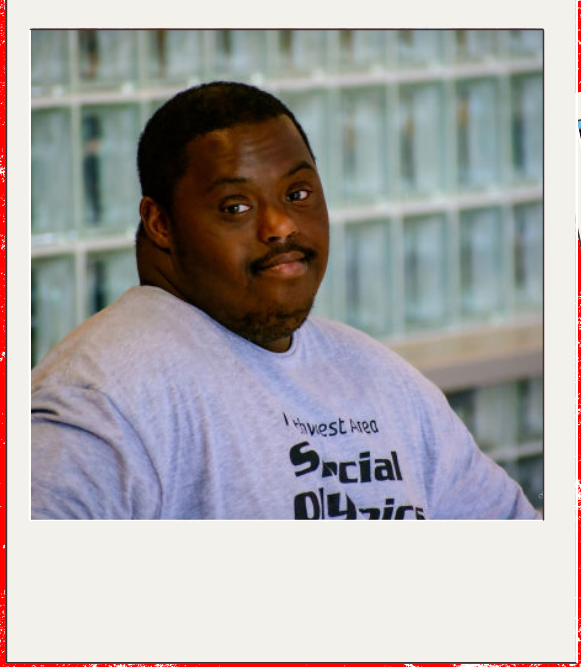
LIABILITIES AND NET ASSETS

	2022	2021
CURRENT LIABILITIES		
Accounts Payable	\$ 44,317	\$ 18,923
Accrued Expenses	43,083	30,989
Current Portion of Operating Lease Liability	41,264	-
Current Portion of Financing Lease Liability	8,393	-
Deferred Rent	-	857
Deferred Contribution	83,595	64,523
TOTAL CURRENT LIABILITIES	220,652	115,292
LONG TERM LIABILITIES		
Long Term Operating Lease Liability, Net of Current Portion	34,821	-
TOTAL LIABILITIES	255,473	115,292
NET ASSETS		
Board Designated Operating Reserve	894,935	988,767
Unrestricted	608,502	258,978
Without Donor Restrictions	1,503,437	1,247,745
With Donor Restrictions	507,877	495,407
TOTAL NET ASSETS	2,011,314	1,743,152
TOTAL LIABILITIES AND NET ASSETS	\$ 2,266,787	\$ 1,858,444

STATEMENT OF ACTIVITIES

FOR THE YEARS ENDED DECEMBER 31, 2022 & 2021

	2022			2021		
	Without Donor Restrictions	With Donor Restrictions	Total	Without Donor Restrictions	With Donor Restrictions	Total
SUPPORT AND REVENUES						
Fundraising Revenues	\$ 266,844	\$ -	\$ 266,844	\$ 239,544	\$ -	\$ 239,544
Contributions	480,588	-	480,588	233,920	133,182	367,102
Grants, Non Government	296,185	819,817	1,116,002	63,392	632,426	695,818
Government Grants/Credits	333,652	-	333,652	384,839	-	384,839
Contributed Non Financial Assets	778,899	-	778,899	551,976	-	551,976
Investment (Loss) Income	(94,177)	-	(94,177)	39,835	-	39,835
Miscellaneous Income	351	-	351	14	-	14
Changes in net asset restrictions:						
Released from Restrictions	807,347	(807,347)	-	497,823	(497,823)	-
	2,869,689	12,470	2,882,159	2,011,343	267,785	2,279,128
EXPENSES						
Program	2,136,713	-	2,136,713	1,481,327	-	1,481,327
Fundraising	348,023	-	348,023	229,594	-	229,594
General and Administrative	129,261	-	129,261	85,713	-	85,713
	2,613,997	-	2,613,997	1,796,634	-	1,796,634
Gain(Loss) on Disposal/Sale of Property & Equipment	-	-	-	(147)	-	(147)
Changes in net assets	255,692	12,470	268,162	214,562	267,785	482,347
NET ASSETS						
Beginning Balance	1,247,745	495,407	1,743,152	1,033,183	227,622	1,260,805
End of year	\$ 1,503,437	\$ 507,877	\$ 2,011,314	\$ 1,247,745	\$ 495,407	\$ 1,743,152



Let me win.
But if I cannot win,
let me be brave
in the attempt.
- Special Olympics athlete oath

Diversity, Equity, & Inclusion Vision Statement

Diversity, Equity and Inclusion are at the heart of all that we do at Special Olympics Louisiana as we strive to promote unity and create a world where everyone belongs. We value, celebrate and respect all differences, backgrounds and perspectives and understand that greater diversity and inclusion creates a stronger and more innovative organization that delivers better results as we work with the athletes in all communities.

800.345.6644



www.specialolympicsla.org



@specialolympicslouisiana

